

Model 8220

A measurement tool for electrical parameters and distribution network disturbances

SPECIFICATIONS

MODEL	8220
ELECTRICAL	
Voltage (TRMS)	Phase-to-Phase: 660V; Phase-to-Neutral: 600V
Current (TRMS)	MN Clamp: 5mA to 6A/120A or 2 to 240A MR Clamp: 10 to 1000A _{AC} , 10 to 1400A _{DC} SR Clamp: 3 to 1200A MiniFlex [®] : 10 to 1000A AmpFlex [®] : 10 to 6500A ⁽¹⁾
Frequency (Hz)	40 to 70Hz
Other Measurements	kW, kVAR, PF, DPF, VA, kWh, kVARh, VAh, Phase Rotation, Temperature, RPM, Resistance, Continuity, Diode Test
Harmonics	1 st to 50 th
Sampling Frequency	256 samples / cycle
Data Storage	Stores nine sets of readings totaling up to 99 snapshots for volts, amps, power and harmonics
Power Source	Six 1.5V AA Alkaline batteries (included)
Battery Life	≥8 hrs with display on ≥40 hrs with display off (recording mode)
MECHANICAL	
Communication Port	Optically isolated USB
Display	Three-line backlit color LCD digital display with custom icons and adjustable brightness & contrast
Dimensions	8.3 x 4.3 x 2.4" (211 x 108 x 60mm)
Weight	1.9 lbs (0.88kg)
Safety Rating	EN 61010, 600V CAT III, IP54, Pollution Degree 2

⁽¹⁾Crest factor at 6500 = 1

PRODUCT INCLUDES

8220 Kit

One user selectable current probe with 10 ft lead and black connector (MN93 example shown), black and red 10 ft voltage leads and alligator clips, optical USB cable, six 1.5V batteries, two safety test probes, carrying bag, and USB stick supplied with DataView[®] software and user manual.



8230 Kit (Model 8230 product details on next page)

Current probe with 10 ft lead and black connector (MN93 example shown), black and red 10 ft voltage leads and alligator clips, optical USB cable, NiMH battery, 120V US wall charger, carrying bag, and USB stick supplied with DataView[®] software and user manual.



FEATURES

- Measures up to 660Vrms or V_{DC}
- Measures up to 6500A_{AC} or 1400A_{DC} (probe dependent)
- Displays Min, Max and Average Volts and Amps, Crest Factor, Peak Value and K-Factor
- Calculates and displays Watts, VARs and VA, Power Factor and Displacement Power Factor for single-phase and balanced three-phase
- Measures and records power systems (kW, VA, kVAR)
- Energy metering (kAh, VARh, kWh)
- Displays total harmonic distortion (THD-F and THD-R) for voltage and current
- Displays individual harmonic values and % for volts and amps through the 50th harmonic
- The Max and Min RMS measurements are calculated every half-period
- Captures and displays inrush current
- Calculates and displays phase rotation and RPM
- Displays temperature in both °F and °C
- Displays resistance up to 2000Ω
- Conducts continuity and diode tests
- Stores up to nine complete sets of readings for all volt, amp, power and harmonic measurements
- Operates on batteries or optional power adapter
- Download stored data snapshots to DataView[®] software via optical USB port (included)
- Includes FREE DataView[®] software for configuring data storage, real-time waveform display, analysis and report generation

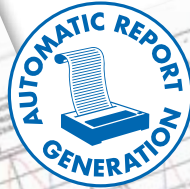
CATALOG NO.	DESCRIPTION
2130.90	Power Quality Meter Model 8220 (no probes)
2130.91	Power Quality Meter Model 8220 w/MN93-BK
2130.92	Power Quality Meter Model 8220 w/SR193-BK
2130.93	Power Quality Meter Model 8220 w/24" 193-24-BK (AmpFlex [®])
2130.96	Power Quality Meter Model 8220 w/MN193-BK
2130.97	Power Quality Meter Model 8220 w/MA193-10-BK

DataView®

Data Analysis and Reporting Software for Power Quality Meters



Configure all functions of the Power Quality Meters

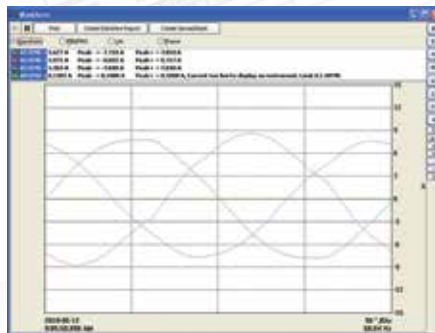


- Display and analyze real-time data on your PC
- Configure functions and parameters from your PC
- Customize views, templates and reports to your exact needs
- Create and store a complete library of configurations that can be uploaded as needed
- Zoom in and out and pan through sections of the graph to analyze the data
- Download, display and analyze recorded data
- Display waveforms, trend graphs, harmonic spectrums, text summaries, transients, event logs and stored alarms
- Print reports using standard or custom templates you design
- Free updates are available on our website www.aemc.com

Typical DataView® Functional, Digital & Graphical Displays



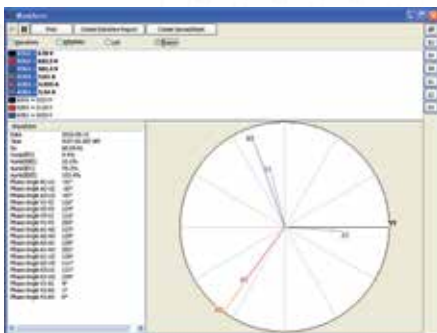
Clear and easy setup of all functions from one tabbed dialog box.



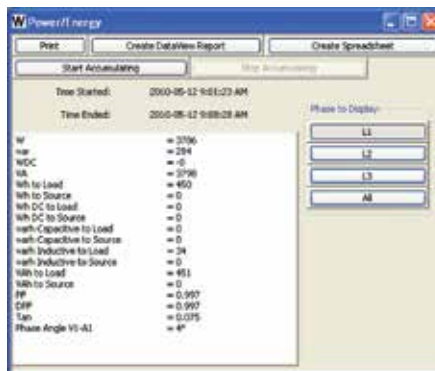
Display real-time waveforms by phase, parameter or total.



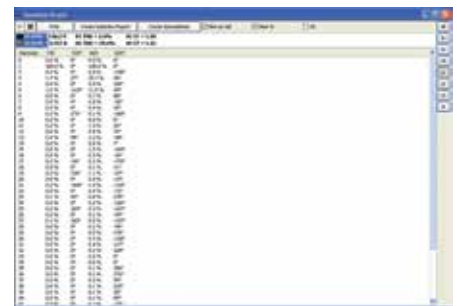
Display all harmonics from 1st to 50th in bargraph form for voltage, current and power.



Display real-time Phasor diagrams. Includes unbalance for both voltage and current.



Display power and energy parameters – both instantaneous and total.



Display harmonics in a text table from harmonic 0 (DC) through the 50th.